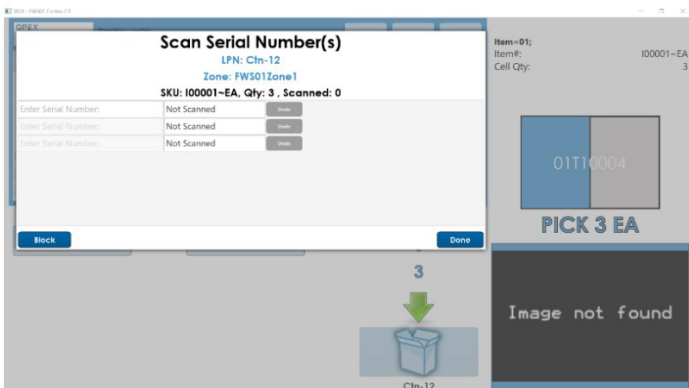
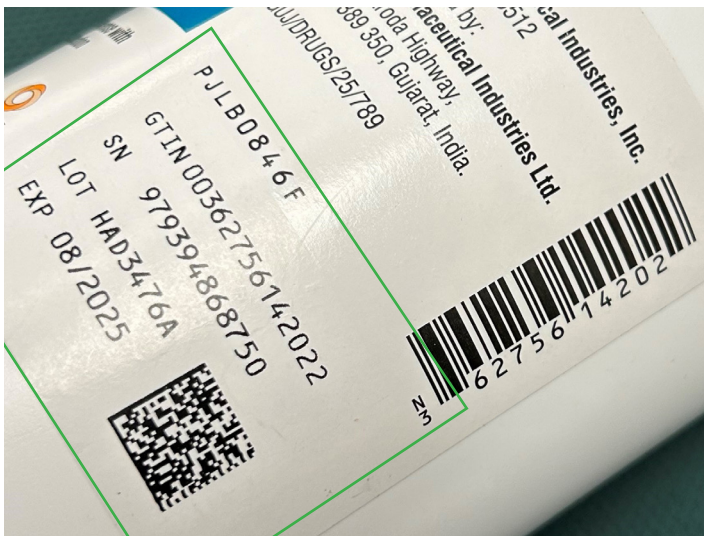
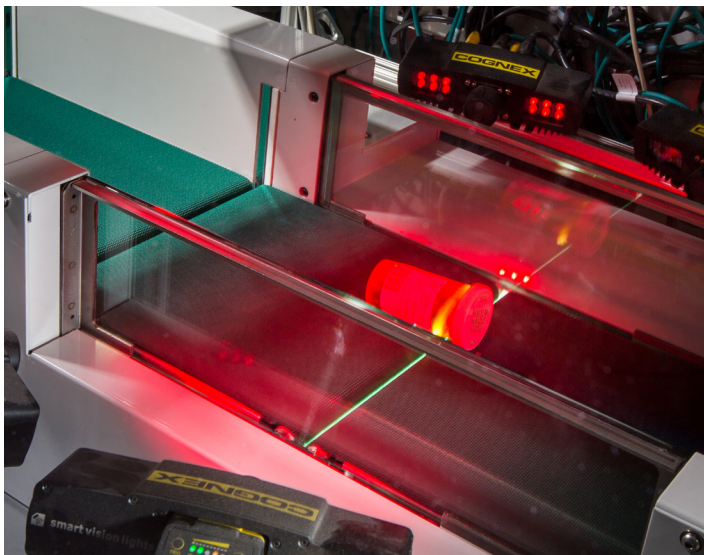


# OPEX<sup>®</sup>

## SOLUTIONS THAT MEET DSCSA REQUIREMENTS



### // BACKGROUND

DSCSA requires electronic traceability for every item within a building by November 27, 2023 from inbound receiving to outbound order delivery. This is done via a 2D data matrix barcode on cases and individual packages (“eaches”) that include a standard subset of required information.

### // SOLUTION

OPEX has developed the necessary capabilities by providing built in methods on our warehouse automation solutions to capture and transmit the 2D barcode that contains the global trade item number (GTIN) unique serial number for that package, expiration date, and LOT number that identifies a selected quantity or selection of material from a single manufacturer on when it was produced.

**“PERFECT PICK ALLOWS US TO MAXIMIZE STORAGE CAPACITY IN A FAIRLY SMALL FOOTPRINT, WHILE INCREASING EFFICIENCIES IN MEETING HIGH-VOLUME OUTPUT.”**

**-Vic Ricci**  
Senior Vice President Operations at Knipper



## OPEX<sup>®</sup> SURE SORT<sup>®</sup>

Automated put wall scans items up to 2400 units per hour. Prescription bottles and other items can be scanned before induction and information on the 2D barcode is captured and transmitted to the WMS to be processed.



## OPEX<sup>®</sup> PERFECT PICK<sup>®</sup>

Perfect Pick goods-to-Person system securely stores pharmaceutical items with pick rates up to 500 presentations per hour. With instructions given by the Cortex user interface, the operator is instructed to capture the serialized information by using the fixed presentation scanner at the operator pick station.



## OPEX<sup>®</sup> INFINITY<sup>™</sup>

Keep inventory secure and maximize the space of your warehouse with a modular racking design of the OPEX Infinity AS/RS system. With instructions given by the Cortex user interface, the operator is instructed to capture the serialized information by using the fixed presentation scanner at the various presentation ports.

**Have questions?**

Contact us.

 [warehouseautomation.com](http://warehouseautomation.com)

 [info@opex.com](mailto:info@opex.com)

**OPEX<sup>®</sup>**